

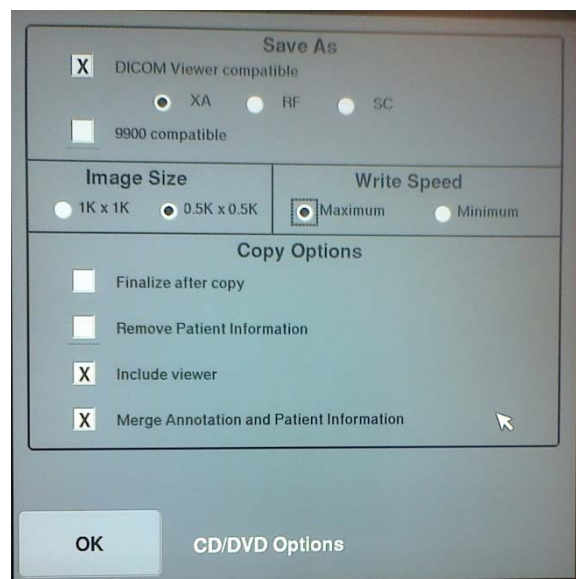
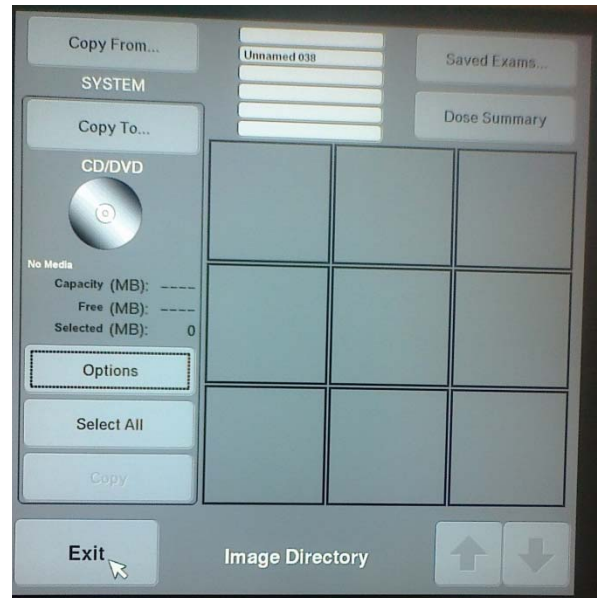
Hello Team,

A few of you have recently had questions about the correct method to load DICOM images to CD or DVD using a GE OEC 9800 or 9900. Last weekend I had the chance to spend time to a GE OEC applications specialist and pick his brain, so to speak.

After selecting the Image Directory button you'll see a screen that looks like the one pictured on the right. At this point you can touch individual images in the 9-image collage and then the CD/DVD symbol. If you wish to copy more than one image to the disc, hold down the **Ctrl** button on the keyboard, then each image you want to copy before touching the CD/DVD symbol. If you want to copy all of the patient's images to disc, press the "Select All" button on the touchscreen, then the CD/DVD symbol.

Now, to ensure you're burning DICOM images in the correct format to disc, make sure the following keys are checked with an X:

- DICOM Viewer compatible
  - Ensures the images will be compatible with DICOM viewer software on computers and laptops
- XA
  - This means, X-ray Angiography, and is the more common designation used to send DICOM images over a server. "RA" means "Radiology Angiography" and "SC" means "Secondary Capture", which is rarely used.



- Image Size – in most cases our customers will be happy with an image size of 0.5K x 0.5K. These burn faster to the disc too.
- Write Speed – Select “Maximum”
- Include Viewer
  - This function loads DICOM viewer software to each disc
- Merge Annotation and Patient Information
  - Includes all patient ID information and markers or annotations on the image

Only check the “Finalize after copy” box when you’re loading the last patient for the day to the DVD. This closes the disc to the possibility of adding any additional data.

Only check the “Remove Patient Information” box if the customer doesn’t want patient ID information included, for example if the images are to be used for teaching, and they want to ensure patient confidentiality.

One last recommendation is to always use (-R) DVD’s for burning images. GE OEC has recently discovered an issue with the 9900 where images and patient information are sometimes incorrectly loaded when using CD’s.